



NPR

College of Engineering & Technology

Approved by AICTE, Affiliated to Anna University,
Accredited by NAAC WITH 'A' GRADE | Recognized by UGC under 2 (f)
Natham, Dindigul - 624 401. Web: www.nprcet.org



Faculty Feedback on Curriculum Info – Feedback Analysis Report

Academic Year: 2022-2023

Report Date: 15/02/2023 From: 9/01/2023 To: 10/02/2023

S.No	Question's	Excellent	Very Good	Good	Fair	Poor	Total Weightage	Percentage	3-Scale Weightage
1	The Learning Objectives are clear and appropriate to the program	64	28	11	0	0	465	90.29	2.71
2	The curriculum and Syllabus are well organized and suitable to the program.	54	39	10	0	0	456	88.54	2.66
3	The text books/ reference books are well suited to the courses.	49	44	10	0	0	451	87.57	2.63
4	The system followed by the university for the design and development of curriculum is effective	35	36	32	0	0	415	80.58	2.42
5	Provision to update curriculum time to time.	32	36	35	0	0	409	79.42	2.38
6	How do you rate the distribution of contact hours among the course components?	47	33	23	0	0	436	84.66	2.54
7	The curriculum has a good balance between theory and practical.	34	31	38	0	0	408	79.22	2.38





NPR

College of Engineering & Technology

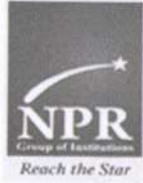
Approved by AICTE, Affiliated to Anna University,
Accredited by NAAC WITH 'A' GRADE | Recognized by UGC under 2 (f)
Natham, Dindigul - 624 401. Web: www.nprcet.org



8	How do rate the electives offered in your program for the technological advancements?	34	32	37	0	0	409	79.42	2.38
AVERAGE SCORE							431.13	83.71	2.51


Dr. J.SUNDARARAJAN,
B.E., M.Tech., Ph.D.,
Principal
N.P.R. College of Engineering & Technology
Natham, Dindigul (Dt) - 624 401.





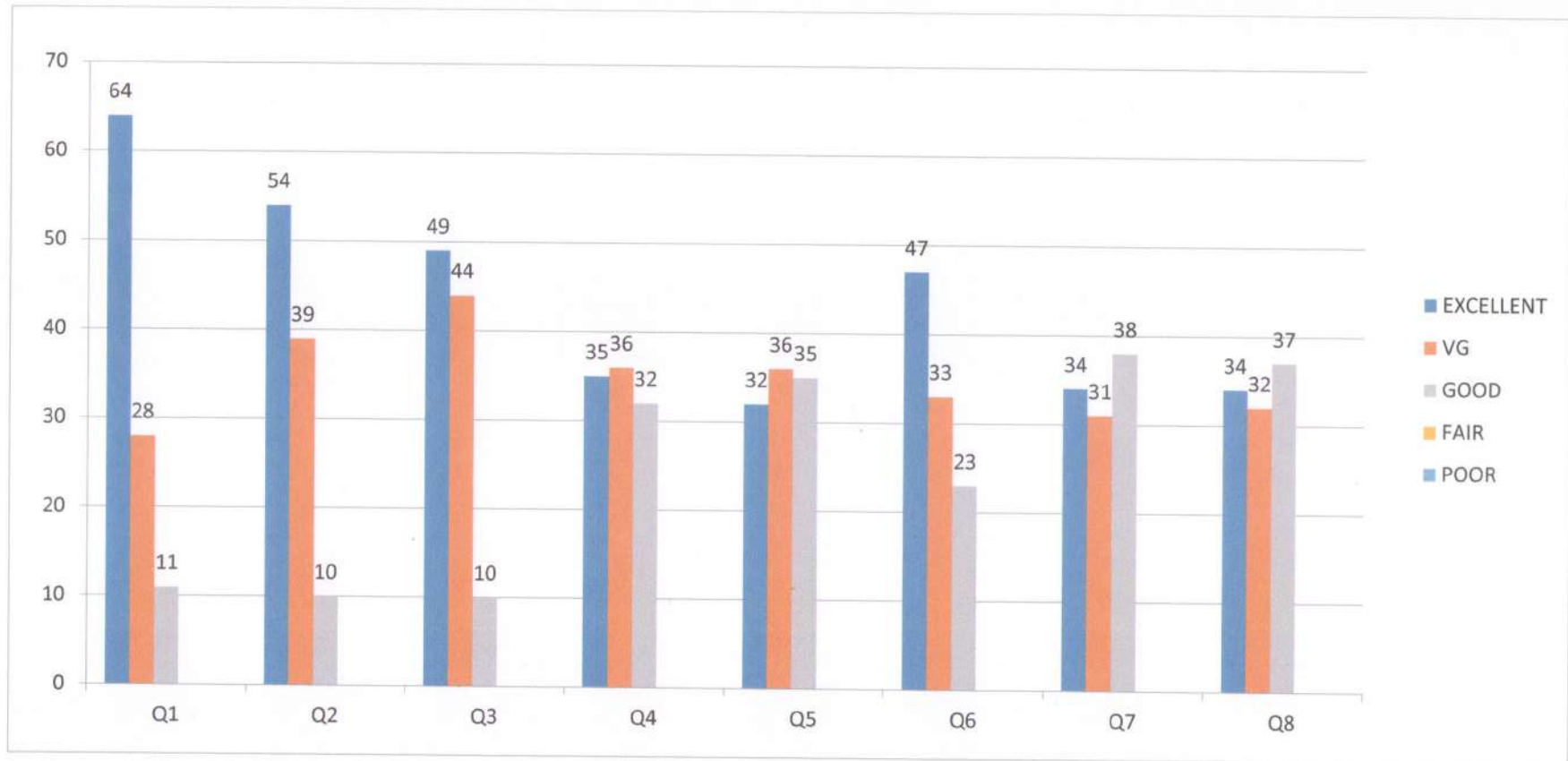
NPR

College of Engineering & Technology

Approved by AICTE, Affiliated to Anna University,
Accredited by NAAC WITH 'A' GRADE | Recognized by UGC under 2 (f)
Natham, Dindigul - 624 401. Web: www.nprcet.org



FACULTY FEEDBACK



Faculty Feedback From 9/01/2023 To 10/02/2023





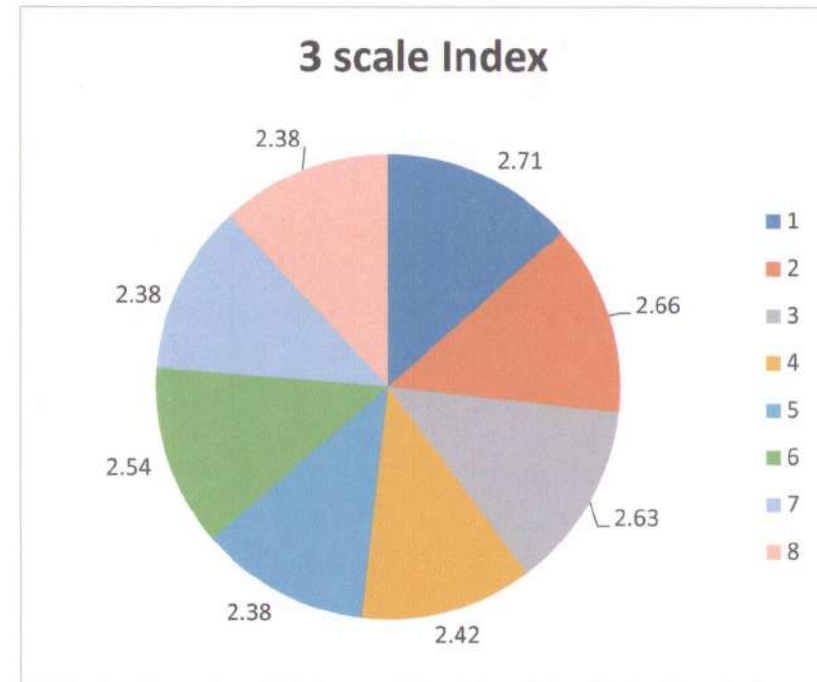
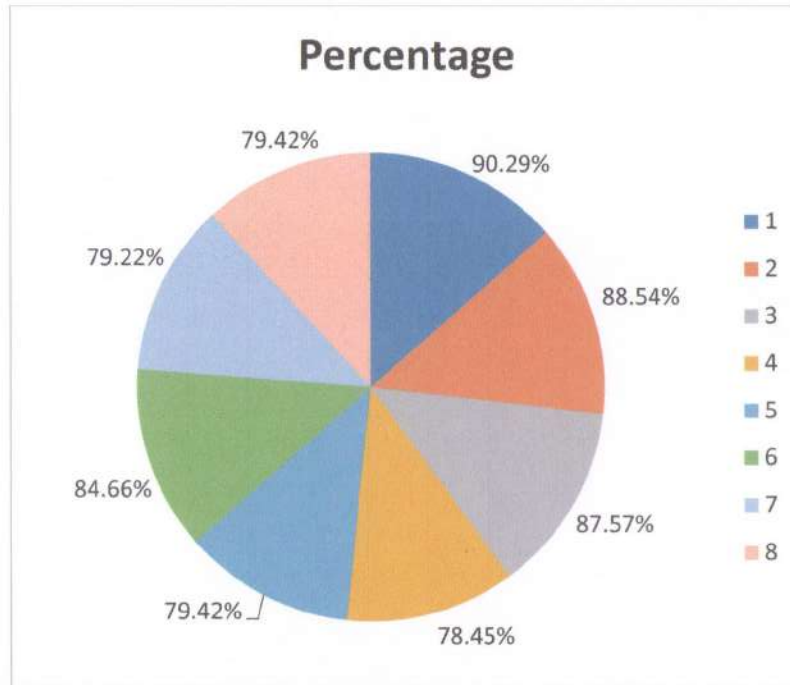
NPR

College of Engineering & Technology

Approved by AICTE, Affiliated to Anna University,
Accredited by NAAC WITH 'A' GRADE | Recognized by UGC under 2 (f)
Natham, Dindigul - 624 401. Web: www.nprcet.org



FACULTY FEEDBACK



Faculty Feedback From 9/01/2023 To 10/02/2023

