



### Students Feedback on Curriculum Info – Feedback Analysis Report

Academic Year: 2022-2023

Report Date: 15/02/2023

From: 09/01/2023 To: 10/02/2023

S.No	Question's	Excellent	Very Good	Good	Fair	Poor	Total Weightage	Percentage	3-Scale Weightage
1	How do you rate the sequence of the Courses that you have studied are in sequence to what you have studied in the previous semester?	390	229	118	55	38	3368	<b>81.16</b>	2.43
2	How do you rate the syllabus of the courses that you have studied in relation to the competencies expected out of the course?	400	220	135	52	23	3412	<b>82.22</b>	2.47
3	How do you rate the relevance of the units in Syllabus relevant to the course?	385	220	160	36	29	3386	<b>81.59</b>	2.45
4	How do you rate the sequence of the units in the course?	378	250	140	48	14	3420	<b>82.41</b>	2.47
5	How do you rate the allocation of the credits to the courses?	420	220	135	40	15	3480	<b>83.86</b>	2.52
6	How do you rate the distribution of the contact hours among the course components (L-T-P)?	370	220	160	55	25	3345	<b>80.60</b>	2.42
7	How do you rate the offering of the electives in terms of their relevance to the specialization	380	190	180	64	16	3344	<b>80.58</b>	2.42





# NPR

## College of Engineering & Technology

Approved by AICTE, Affiliated to Anna University,  
Accredited by NAAC WITH 'A' GRADE | Recognized by UGC under 2 (f)  
Natham, Dindigul - 624 401. Web: www.nprcet.org



	streams?								
8	How do you rate the electives offered in relation to the Technological advancements?	400	180	183	47	20	3383	<b>81.52</b>	2.45
9	How do you rate the relevance of the Text Books and reference books by their International recognition to the Courses?	370	230	165	45	20	3375	<b>81.33</b>	2.44
10	Rate the Size of syllabus in terms of the load on the student	370	175	200	55	30	3290	<b>79.28</b>	2.38
11	Rate the courses in terms of extra learning or self learning considering the design of the courses	270	214	230	89	27	3101	<b>74.72</b>	2.24
12	Rate the courses in terms of sequence of offering considering whether the preceding courses have been covered	365	220	140	65	40	3295	<b>79.40</b>	2.38
13	How do you Rate the loading of the courses in a semester?	426	203	130	41	30	3444	<b>82.99</b>	2.49
14	How do you rate the evaluation scheme designed for each of the course?	350	219	185	41	35	3298	<b>79.47</b>	2.38





# NPR

## College of Engineering & Technology

Approved by AICTE, Affiliated to Anna University,  
Accredited by NAAC WITH 'A' GRADE | Recognized by UGC under 2 (f)  
Natham, Dindigul - 624 401. Web: www.nprcet.org



15	How do you rate the objectives stated for each of the course?	370	199	175	58	28	3315	<b>79.88</b>	2.40
16	How do you rate competencies expected out of the course?	360	185	165	72	48	3227	<b>77.76</b>	2.33
17	How do you rate the composition of the courses in terms of Basic science, Engineering science, Humanities, Discipline core, discipline elective, open elective, project etc.?	370	196	156	68	40	3278	<b>78.99</b>	2.37
18	How do you rate the experiments in relation to the real life Applications?	295	198	198	90	49	3090	<b>74.46</b>	2.23
19	How do you rate the domain used for designing the experiments for the LAB components?	290	233	160	98	49	3107	<b>74.87</b>	2.25
20	How do you rate the courses having LAB components?	321	220	144	99	46	3161	<b>76.17</b>	2.29
<b>AVERAGE SCORE</b>							<b>3306</b>	<b>79.66</b>	<b>2.39</b>



**Dr. J.SUNDARARAJAN,**  
B.E., M.Tech., Ph.D.,

Principal

N.P.R. College of Engineering & Technology  
Natham, Dindigul (Dt) - 624 401.



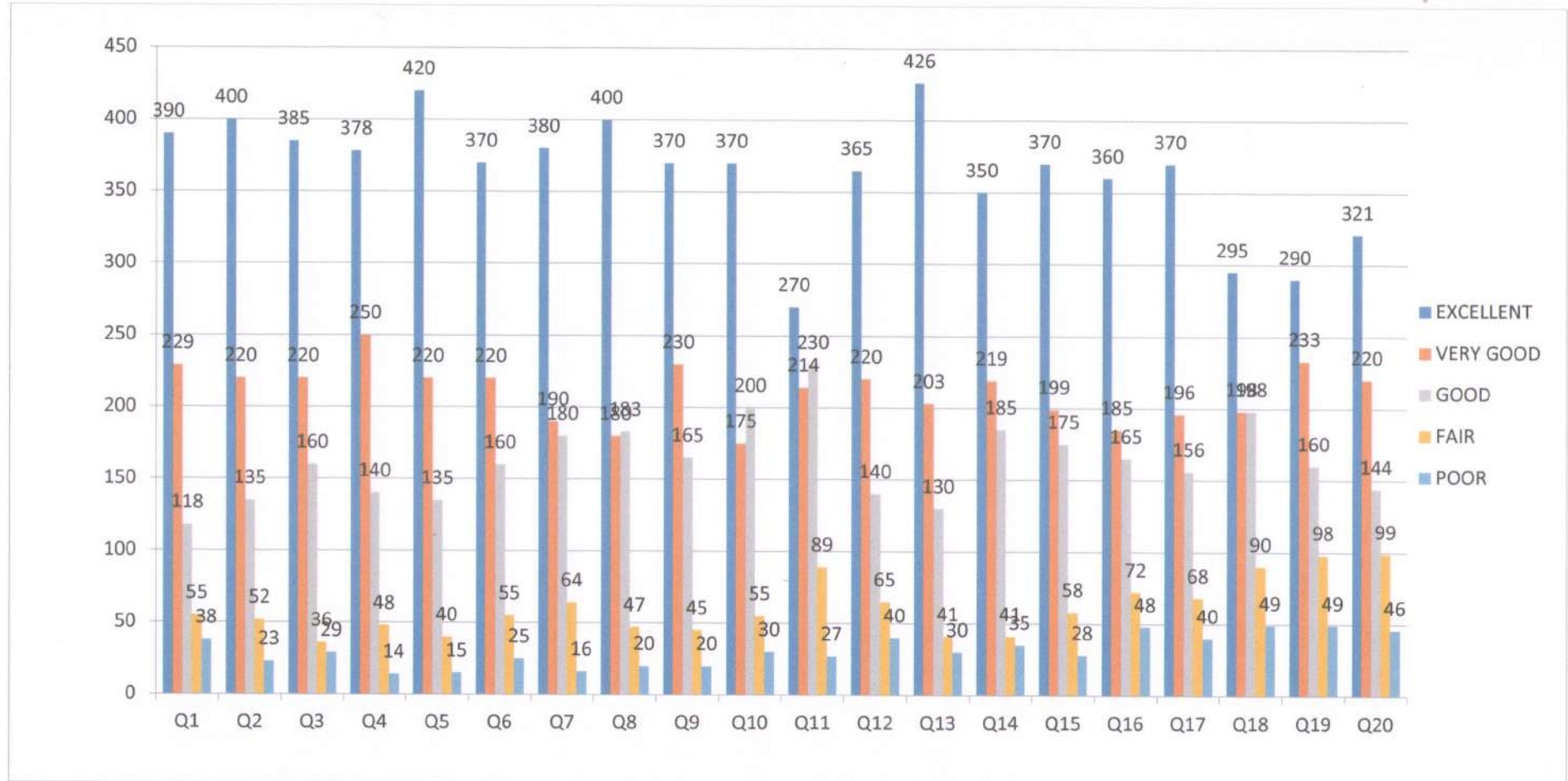
# NPR

## College of Engineering & Technology

Approved by AICTE, Affiliated to Anna University,  
Accredited by NAAC WITH 'A' GRADE | Recognized by UGC under 2 (f)  
Natham, Dindigul - 624 401. Web: www.nprcet.org



### STUDENTS FEEDBACK



Students Feedback from 09/01/2023 to 10/02/2023





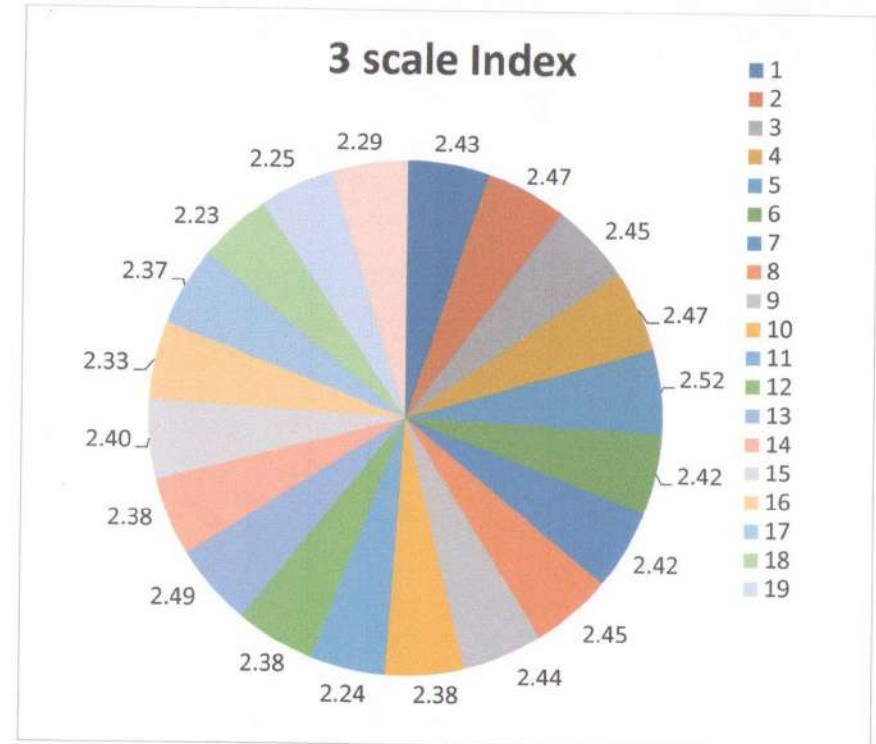
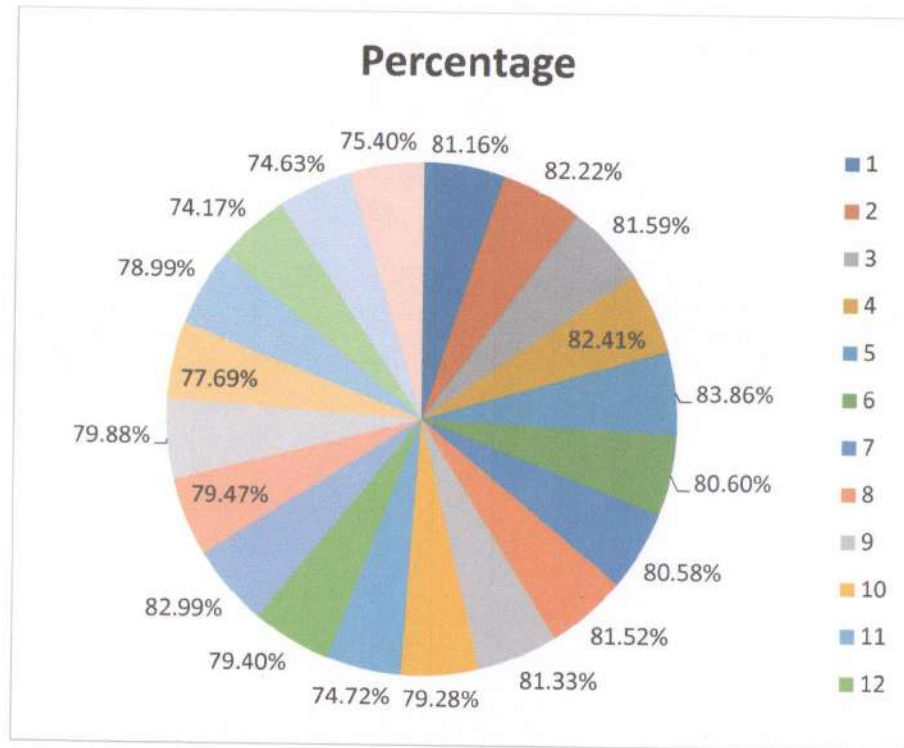
# NPR

## College of Engineering & Technology

Approved by AICTE, Affiliated to Anna University,  
Accredited by NAAC WITH 'A' GRADE | Recognized by UGC under 2 (f)  
Natham, Dindigul - 624 401. Web: www.nprcet.org



### STUDENTS FEEDBACK



Students Feedback from 09/01/2023 to 10/02/2023

