



NPR

COLLEGE OF ENGINEERING & TECHNOLOGY (AUTONOMOUS)

Approved by AICTE, New Delhi & Affiliated to Anna University, Chennai | Accredited by NAAC with 'A' GRADE
Recognized by UGC under 2 (f) | ISO 9001:2015 Certified | Web: www.nprcolleges.org | E-Mail: nprcetprincipal@nprcolleges.org
NPR Nagar, Natham - 624 401, Dindigul Dist, Tamil Nadu. Ph: 04544 - 246500, 501, 502.

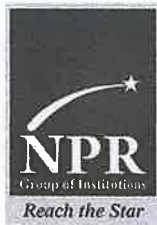


Alumni Feedback on Curriculum Info – Feedback Analysis Report

Academic Year: 2023-2024 Report Date:15/03/2024 From:08/02/2024 To:10/03/2024

S.No	Question's	Excellent	Very Good	Good	Fair	Poor	Total Weightage	Percentage	3-Scale Weightage
1	How do you rate relevance of the courses in relation to the program?	343	157	109	11	0	2692	86.84	2.61
2	How do you rate the sequence of the courses included into the programs?	320	165	106	26	3	2633	84.94	2.55
3	How do you rate the competencies in relation to the course content?	315	171	103	30	1	2629	84.81	2.54
4	How do rate the sequence of the topics in the units?	308	148	135	29	0	2595	83.71	2.51
5	Rate the offering of the in relation to the specialization streams?	302	177	107	34	0	2607	84.10	2.52
6	How do you rate the offering of the electives in relation to the Technological advancements?	321	162	109	28	0	2636	85.03	2.55
7	How do you rate the courses which are skills related suiting to the Industry included into the programs?	280	149	151	34	6	2523	81.39	2.44





NPR

COLLEGE OF ENGINEERING & TECHNOLOGY (AUTONOMOUS)



Approved by AICTE, New Delhi & Affiliated to Anna University, Chennai | Accredited by NAAC with 'A' GRADE
Recognized by UGC under 2 (f) | ISO 9001:2015 Certified | Web: www.nprcolleges.org | E-Mail: nprcetprincipal@nprcolleges.org
NPR Nagar, Natham - 624 401, Dindigul Dist, Tamil Nadu. Ph: 04544 - 246500, 501, 502.

8	How do you rate the domain used for designing the experiments in terms of the suitability of the Tools to the domain?	232	161	152	66	9	2401	77.45	2.32
9	How do you rate the experiments in terms of their relevance to the real life application?	246	125	168	73	8	2388	77.03	2.31
10	How do you rate the courses that you have learnt in relation to your current Job?	309	132	114	65	0	2545	82.10	2.46
AVERAGE SCORE							2564.90	82.74	2.48



Dr. B. MARUTHU KANNAN, M.E., Ph.D.,

Principal

NPR College of Engineering and Technology
Natham, Dindigul (Dt)- 624 401



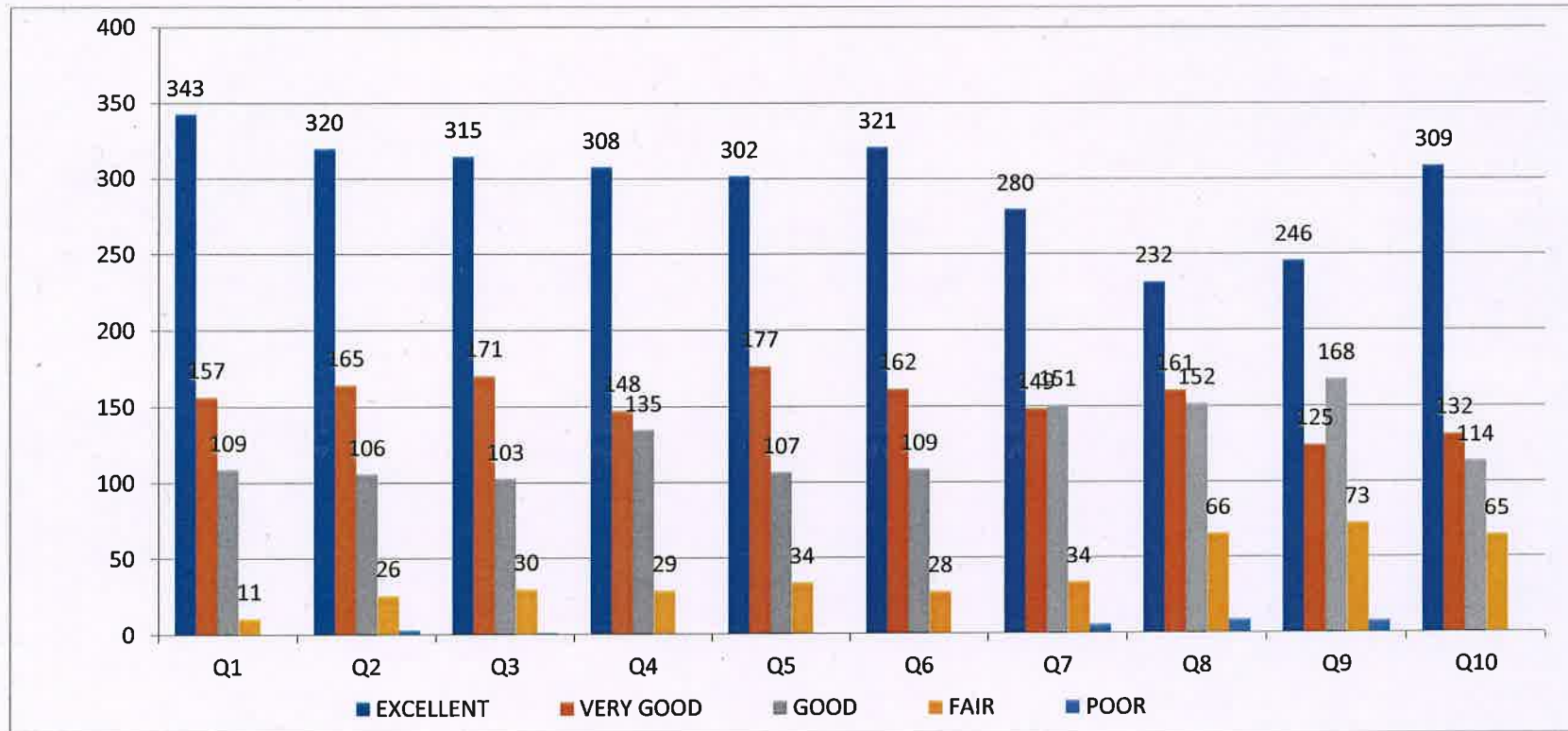
NPR

COLLEGE OF ENGINEERING & TECHNOLOGY (AUTONOMOUS)



Approved by AICTE, New Delhi & Affiliated to Anna University, Chennai | Accredited by NAAC with 'A' GRADE
Recognized by UGC under 2 (f) | ISO 9001:2015 Certified | Web: www.nprcolleges.org | E-Mail: nprcetprincipal@nprcolleges.org
NPR Nagar, Natham - 624 401, Dindigul Dist, Tamil Nadu. Ph: 04544 - 246500, 501, 502.

ALUMNI FEEDBACK



Alumni Feedback From 08/02/2024 To 10/03/2024





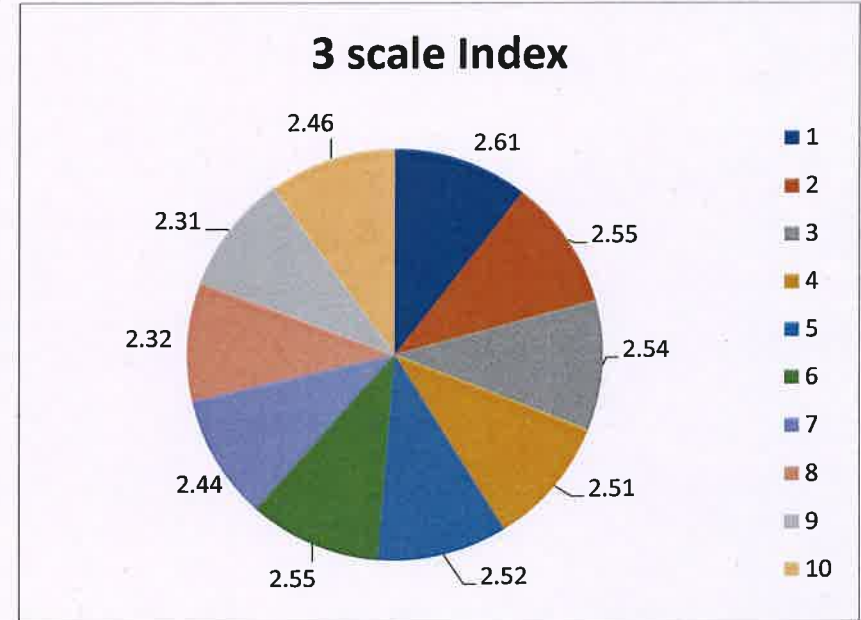
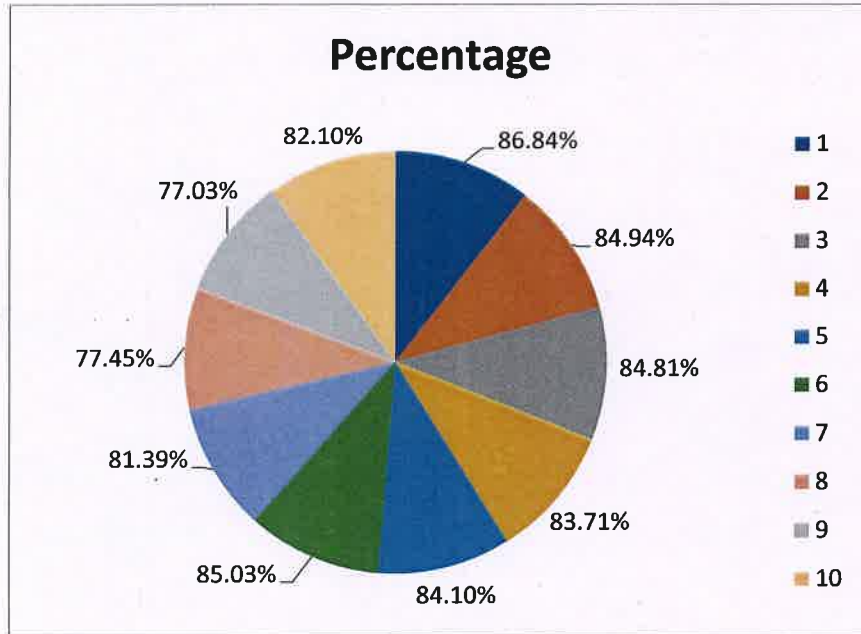
NPR

COLLEGE OF ENGINEERING & TECHNOLOGY (AUTONOMOUS)



Approved by AICTE, New Delhi & Affiliated to Anna University, Chennai | Accredited by NAAC with 'A' GRADE
Recognized by UGC under 2 (f) | ISO 9001:2015 Certified | Web: www.nprcolleges.org | E-Mail: nprcatprincipal@nprcolleges.org
NPR Nagar, Natham - 624 401, Dindigul Dist, Tamil Nadu. Ph: 04544 - 246500, 501, 502.

ALUMNI FEEDBACK



Alumni Feedback From 08/02/2024 To 10/03/2024

