



NPR

COLLEGE OF ENGINEERING & TECHNOLOGY (AUTONOMOUS)



Approved by AICTE, New Delhi & Affiliated to Anna University, Chennai | Accredited by NAAC with 'A' GRADE
Recognized by UGC under 2 (f) | ISO 9001:2015 Certified | Web: www.nprcolleges.org | E-Mail: nprcetprincipal@nprcolleges.org
NPR Nagar, Natham - 624 401, Dindigul Dist, Tamil Nadu. Ph: 04544 - 246500, 501, 502.

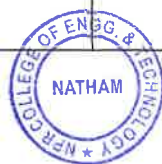
Students Feedback on Curriculum Info – Feedback Analysis Report

Academic Year: 2023-2024

Report Date: 15/03/2024

From: 08/02/2024 To: 10/03/2024

S.No	Question's	Excellent	Very Good	Good	Fair	Poor	Total Weightage	Percentage	3-Scale Weightage
1	How do you rate the sequence of the Courses that you have studied are in sequence to what you have studied in the previous semester?	440	259	118	55	38	3738	82.15	2.46
2	How do you rate the syllabus of the courses that you have studied in relation to the competencies expected out of the course?	430	255	138	64	23	3735	82.09	2.46
3	How do you rate the relevance of the units in Syllabus relevant to the course?	435	240	164	42	29	3740	82.20	2.47
4	How do you rate the sequence of the units in the course?	445	250	145	56	14	3786	83.21	2.50
5	How do you rate the allocation of the credits to the courses?	460	260	130	45	15	3835	84.29	2.53
6	How do you rate the distribution of the contact hours among the course components (L-T-P)?	430	230	165	60	25	3710	81.54	2.45
7	How do you rate the offering of the electives in terms of their relevance to the specialization streams?	420	220	160	74	36	3644	80.09	2.40





NPR

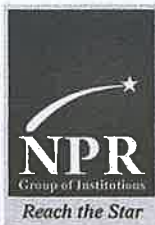
COLLEGE OF ENGINEERING & TECHNOLOGY (AUTONOMOUS)



Approved by AICTE, New Delhi & Affiliated to Anna University, Chennai | Accredited by NAAC with 'A' GRADE
Recognized by UGC under 2 (f) | ISO 9001:2015 Certified | Web: www.nprcolleges.org | E-Mail: nprcetprincipal@nprcolleges.org
NPR Nagar, Natham - 624 401, Dindigul Dist, Tamil Nadu. Ph: 04544 - 246500, 501, 502.

8	How do you rate the electives offered in relation to the Technological advancements?	440	195	185	78	20	3711	80.85	2.43
9	How do you rate the relevance of the Text Books and reference books by their International recognition to the Courses?	410	240	170	62	28	3672	80.70	2.42
10	Rate the Size of syllabus in terms of the load on the student	410	185	220	65	30	3610	79.34	2.38
11	Rate the courses in terms of extra learning or self learning considering the design of the courses	310	225	220	105	50	3370	74.07	2.22
12	Rate the courses in terms of sequence of offering considering whether the preceding courses have been covered	365	220	210	75	40	3525	77.47	2.32
13	How do you Rate the loading of the courses in a semester?	426	226	180	48	30	3700	81.32	2.44
14	How do you rate the evaluation scheme designed for each of the course?	420	240	155	60	35	3680	80.88	2.43
15	How do you rate the objectives stated for each of the course?	401	240	177	64	28	3652	80.26	2.41





NPR

COLLEGE OF ENGINEERING & TECHNOLOGY (AUTONOMOUS)

Approved by AICTE, New Delhi & Affiliated to Anna University, Chennai | Accredited by NAAC with 'A' GRADE
Recognized by UGC under 2 (f) | ISO 9001:2015 Certified | Web: www.nprcolleges.org | E-Mail: nprcetprincipal@nprcolleges.org
NPR Nagar, Natham - 624 401, Dindigul Dist, Tamil Nadu. Ph: 04544 - 246500, 501, 502.



16	How do you rate competencies expected out of the course?	385	245	152	80	48	3569	78.44	2.35
17	How do you rate the composition of the courses in terms of Basic science, Engineering science, Humanities, Discipline core, discipline elective, open elective, project etc.?	390	228	168	84	40	3574	78.55	2.36
18	How do you rate the experiments in relation to the real life Applications?	320	207	220	114	49	3365	73.96	2.22
19	How do you rate the domain used for designing the experiments for the LAB components?	335	220	180	102	73	3372	74.11	2.22
20	How do you rate the courses having LAB components?	385	230	150	95	50	3535	77.69	2.33
AVERAGE SCORE							3626	79.66	2.39

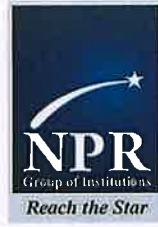


Dr. B. MARUTHU KANNAN, M.E., Ph.D.,

Principal

NPR College of Engineering and Technology

Natham, Dindigul(Dt)-624 401



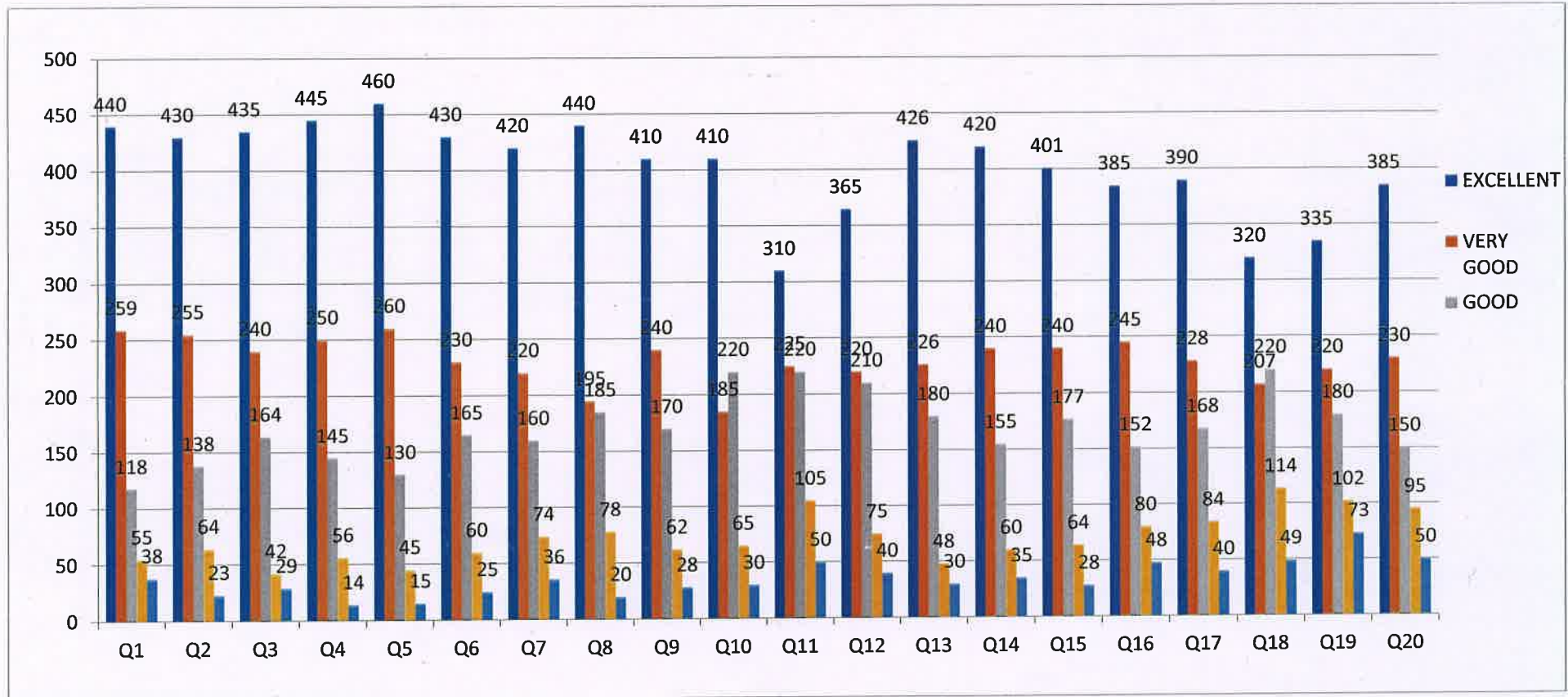
NPR

COLLEGE OF ENGINEERING & TECHNOLOGY (AUTONOMOUS)

Approved by AICTE, New Delhi & Affiliated to Anna University, Chennai | Accredited by NAAC with 'A' GRADE
Recognized by UGC under 2 (f) | ISO 9001:2015 Certified | Web: www.nprcolleges.org | E-Mail: nprcetprincipal@nprcolleges.org
NPR Nagar, Natham - 624 401, Dindigul Dist, Tamil Nadu. Ph: 04544 - 246500, 501, 502.



STUDENTS FEEDBACK



Students Feedback from 08/02/2024 to 10/03/2024





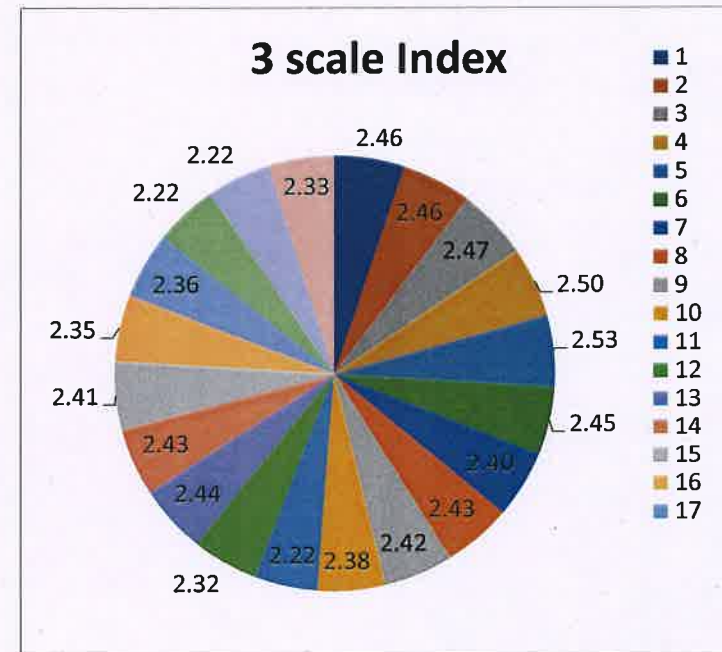
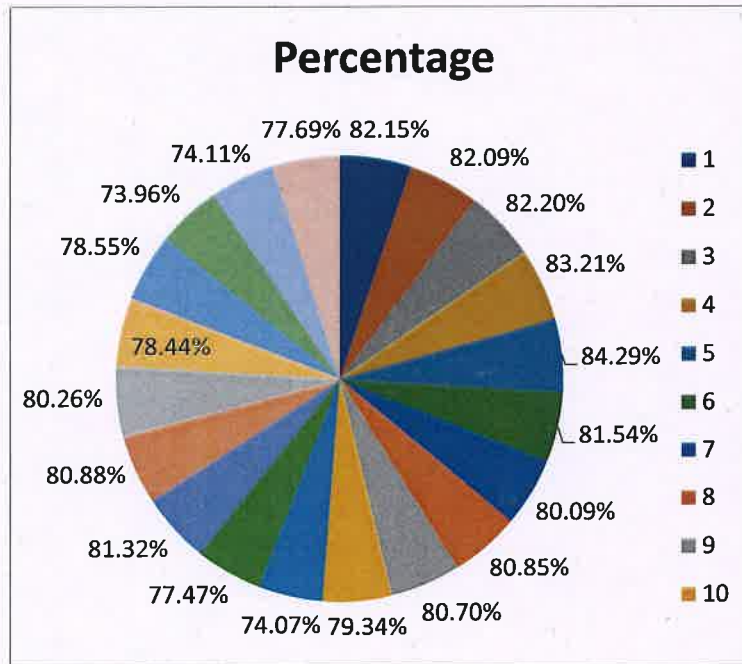
NPR

COLLEGE OF ENGINEERING & TECHNOLOGY (AUTONOMOUS)

Approved by AICTE, New Delhi & Affiliated to Anna University, Chennai | Accredited by NAAC with 'A' GRADE
Recognized by UGC under 2 (f) | ISO 9001:2015 Certified | Web: www.nprcolleges.org | E-Mail: nprcetprincipal@nprcolleges.org
NPR Nagar, Natham - 624 401, Dindigul Dist, Tamil Nadu. Ph: 04544 - 246500, 501, 502.



STUDENTS FEEDBACK



Students Feedback from 08/02/2024 to 10/03/2024

