



NPR College of Engineering & Technology

NPR Nagar, Natham, Dindigul - 624401, Tamil Nadu, India.
Approved by AICTE, New Delhi & Affiliated to Anna University, Chennai.
An ISO 9001:2015 Certified Institution.
Phone No: 04544- 246 500, 246501, 246502.



Website : www.nprcolleges.org, www.nprcet.org, Email nprcetprincipal@nprcolleges.org

Alumni Feedback on Curriculum Info – Feedback Analysis Report

Academic Year: 2020-2021

Report Date: 20/01/2021

From:18/12/2020

To:18/01/2021

S.No	Question's	Excellent	Very Good	Good	Fair	Poor	Total Weightage	Percentage	3-Scale Weightage
1	How do you rate relevance of the courses in relation to the program?	124	58	41	7	0	989	86.00%	2.58
2	How do you rate the sequence of the courses included into the programs?	120	72	31	6	1	994	86.43%	2.59
3	How do you rate the competencies in relation to the course content?	82	102	40	6	0	950	82.61%	2.48
4	How do rate the sequence of the topics in the units?	72	103	49	6	0	931	80.96%	2.43
5	Rate the offering of the in relation to the specialization streams?	80	79	64	7	0	922	80.17%	2.41
6	How do you rate the offering of the electives in relation to the Technological advancements?	90	89	31	20	0	939	81.65%	2.45
7	How do you rate the courses which are skills related suiting to the Industry included into the programs?	72	78	58	21	1	889	77.30%	2.32
8	How do you rate the domain used for designing the experiments in terms of the	67	82	59	20	2	882	76.70%	2.30





NPR College of Engineering & Technology


NPR Nagar, Natham, Dindigul - 624401, Tamil Nadu, India
Approved by AICTE, New Delhi & Affiliated to Anna University, Chennai
An ISO 9001:2015 Certified Institution.
Phone No: 04544- 246 500, 246501, 246502



Website : www.nprcolleges.org, www.nprcet.org, Email nprcetprincipal@nprcolleges.org

	suitability of the Tools to the domain?								
9	How do you rate the experiments in terms of their relevance to the real life application?	68	80	60	20	2	882	76.70%	2.30
10	How do you rate the courses that you have learnt in relation to your current Job?	105	80	39	6	0	974	84.70%	2.54
AVERAGE SCORE							935.20	81.32%	2.44




Dr. J.SUNDARARAJAN,
B.E., M.Tech., Ph.D.,
Principal
N.P.R. College of Engineering & Technology
Natham, Dindigul-(Dt) - 624 401.

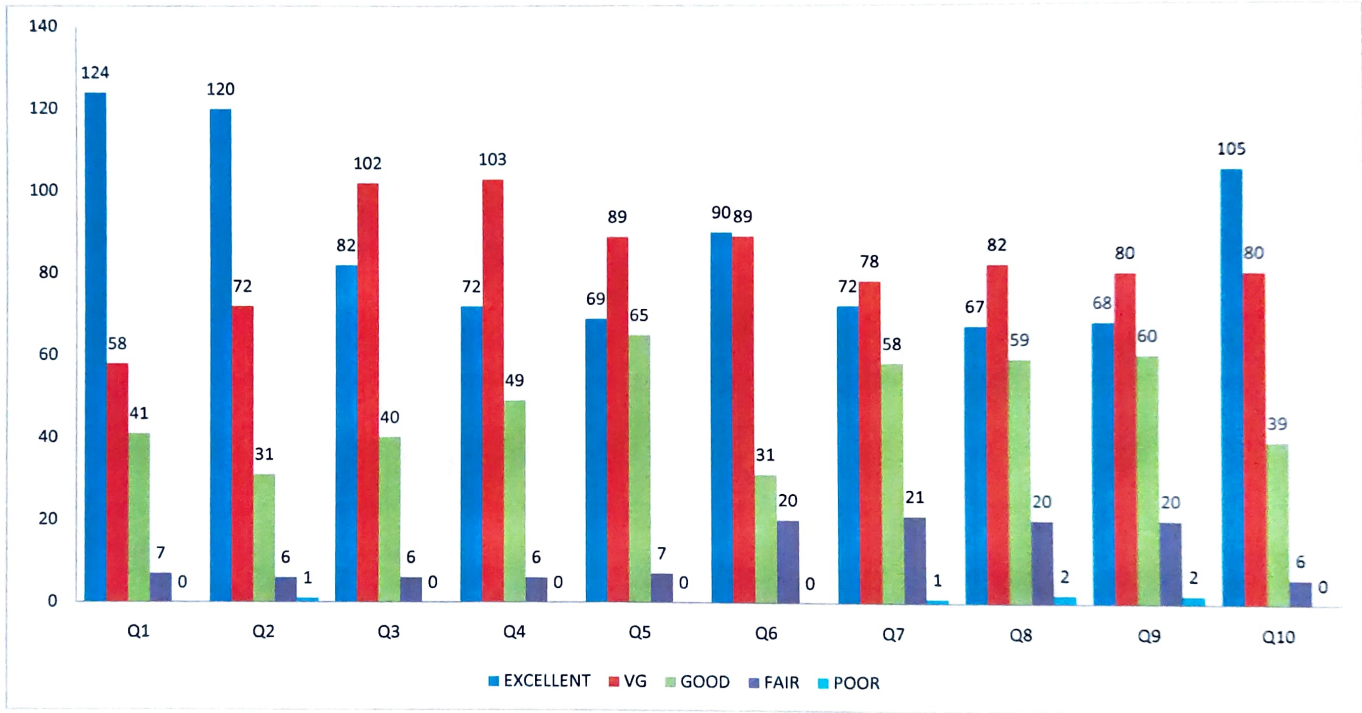


NPR College of Engineering & Technology

NPR Nagar, Natham, Dindigul - 624401, Tamil Nadu, India
Approved by AICTE, New Delhi & Affiliated to Anna University, Chennai
An ISO 9001:2015 Certified Institution
Phone No: 04544- 246 500, 246501, 246502.



Website : www.nprcolleges.org, www.nprcet.org, Email nprcetprincipal@nprcolleges.org



Alumni Feedback – From 18/12/2020 To 18/01/2021





NPR College of Engineering & Technology

NPR Nagar, Natham, Dindigul - 624401, Tamil Nadu, India.
Approved by AICTE, New Delhi & Affiliated to Anna University, Chennai.

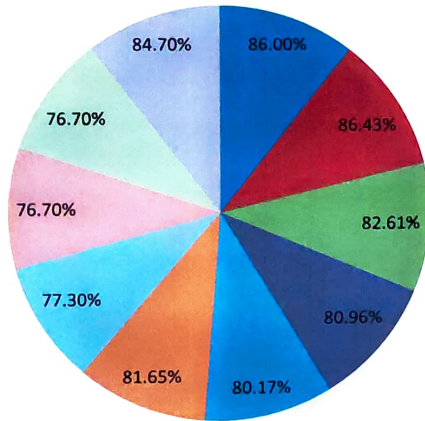
An ISO 9001:2015 Certified Institution.

Phone No: 04544- 246 500, 246501, 246502.

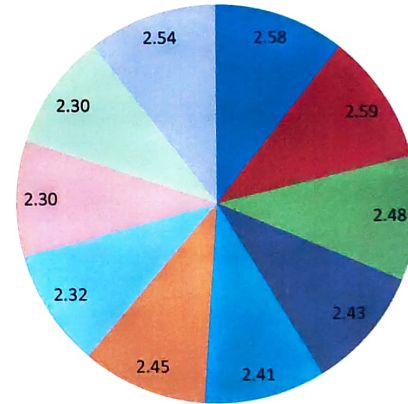
Website : www.nprcolleges.org, www.nprcet.org, Email nprcetprincipal@nprcolleges.org



Percentage



3-Scale Index



Alumni Feedback – From 18/12/2020 To 18/01/2021

