



NPR College of Engineering & Technology

NPR Nagar, Natham, Dindigul - 624401, Tamil Nadu, India.
Approved by AICTE, New Delhi & Affiliated to Anna University, Chennai.

An ISO 9001:2015 Certified Institution.

Phone No: 04544- 246 500, 246501, 246502.

Website : www.nprcolleges.org, www.nprcet.org, Email: nprcetprincipal@nprcolleges.org



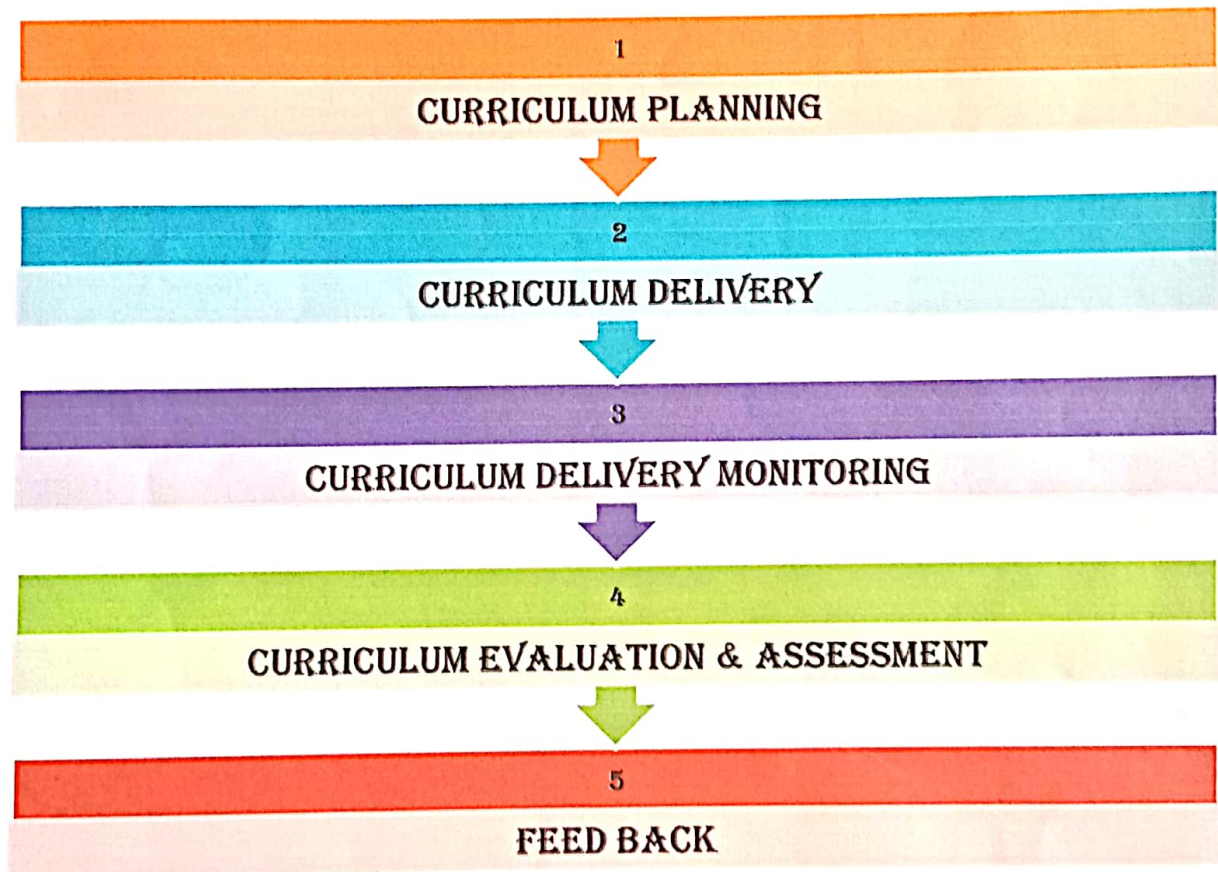
CRITERION1 - CURRICULAR ASPECTS

KEY INDICATOR1.1 CURRICULAR PLANNING AND IMPLEMENTATION

Metric No 1.1.1. The Institution ensures effective curriculum delivery through a well-planned and documented process

FLOW CHART FOR CURRICULUM PLANNING AND DELIVERY

CURRICULUM PLANNING AND IMPLEMENTATION



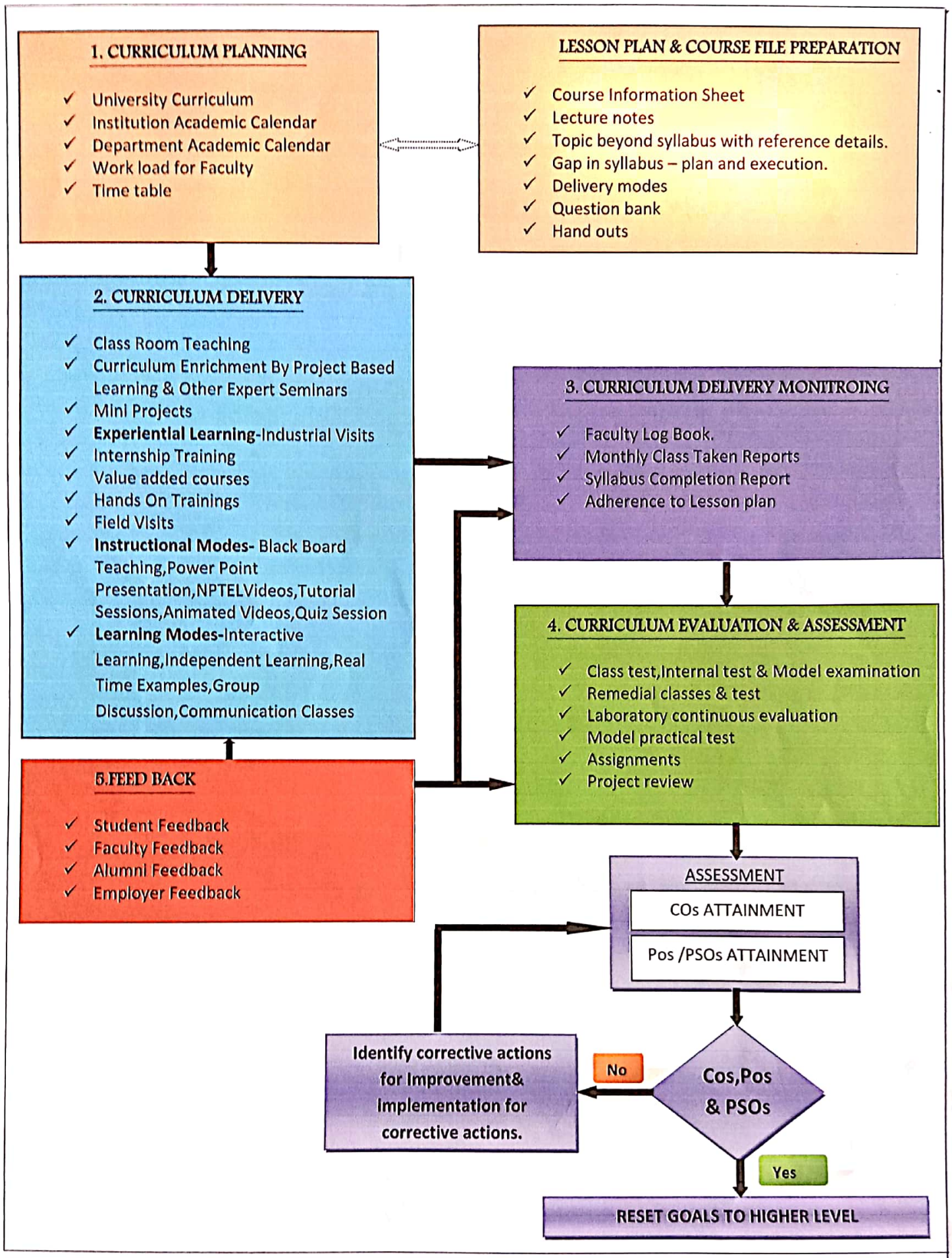
Dr. J.SUNDARARAJAN,

B.E., M.Tech., Ph.D.,

Principal

N.P.R. College of Engineering & Technology

Natham, Dindigul (Dt) - 624 401.



1. CURRICULUM PLANNING

- ✓ University Curriculum
- ✓ Institution Academic Calendar
- ✓ Department Academic Calendar
- ✓ Work load for Faculty
- ✓ Time table

LESSON PLAN & COURSE FILE PREPARATION

- ✓ Course Information Sheet
- ✓ Lecture notes
- ✓ Topic beyond syllabus with reference details.
- ✓ Gap in syllabus – plan and execution.
- ✓ Delivery modes
- ✓ Question bank
- ✓ Hand outs

2. CURRICULUM DELIVERY

- ✓ Class Room Teaching
- ✓ Curriculum Enrichment By Project Based Learning & Other Expert Seminars
- ✓ Mini Projects
- ✓ **Experiential Learning**-Industrial Visits
- ✓ Internship Training
- ✓ Value added courses
- ✓ Hands On Trainings
- ✓ Field Visits
- ✓ **Instructional Modes**- Black Board Teaching, Power Point Presentation, NPTEL Videos, Tutorial Sessions, Animated Videos, Quiz Session
- ✓ **Learning Modes**-Interactive Learning, Independent Learning, Real Time Examples, Group Discussion, Communication Classes

3. CURRICULUM DELIVERY MONITORING

- ✓ Faculty Log Book.
- ✓ Monthly Class Taken Reports
- ✓ Syllabus Completion Report
- ✓ Adherence to Lesson plan

4. CURRICULUM EVALUATION & ASSESSMENT

- ✓ Class test, Internal test & Model examination
- ✓ Remedial classes & test
- ✓ Laboratory continuous evaluation
- ✓ Model practical test
- ✓ Assignments
- ✓ Project review

5. FEED BACK

- ✓ Student Feedback
- ✓ Faculty Feedback
- ✓ Alumni Feedback
- ✓ Employer Feedback

ASSESSMENT

COs ATTAINMENT

Pos /PSOs ATTAINMENT

Cos, Pos & PSOs

No

Yes

Identify corrective actions for Improvement & Implementation for corrective actions.

RESET GOALS TO HIGHER LEVEL